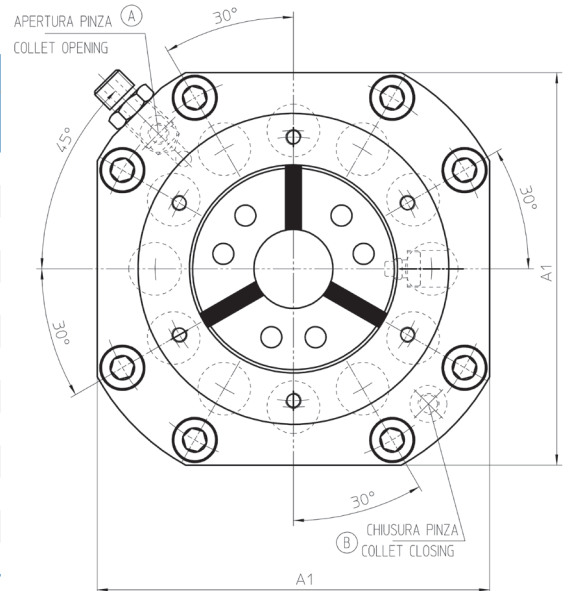
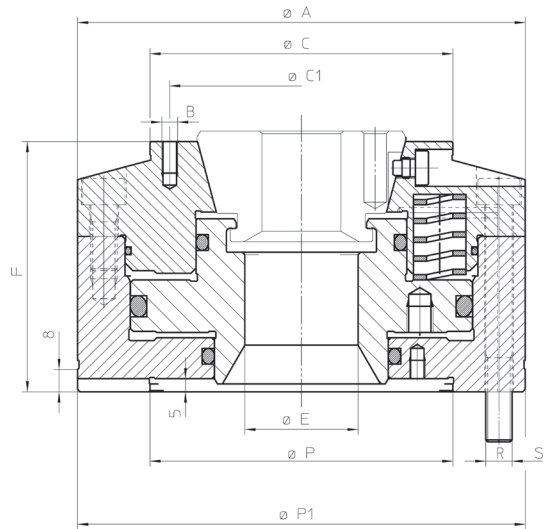
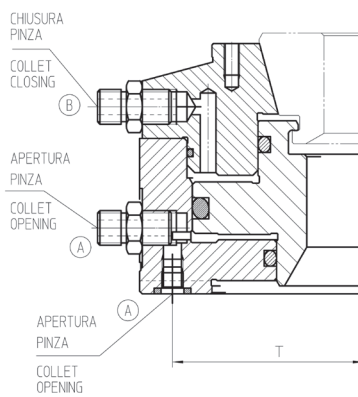
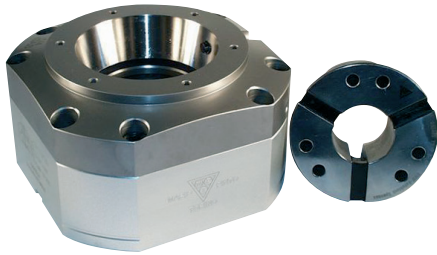


Mandrino porta-pinze statico - Cilindro idraulico incorporato Stationary collet-chuck - Built-in hydraulic cylinder

- Per lavorazioni in barra
For bar machining



Modello MPT - MPT model	SHH 42	SHH 65	SHH 80	SHH 100
Attacco naso mac. - Machine spindle	Z115 Z170	Z140 Z200	Z160 Z215	Z220 Z280
Codice - Code	77740142	77740165	77740180	77740100
A	170	200	215	280
A1	149	174	189	250
B	6xM6	6xM6	6xM6	6xM8
C	115	140	155 h4	200 h4
C1	100	120	135	171.4
E	43	67	82	102
F	95	100	100	102.5
PH7	115	140	160	220
P1 h7	170	200	215	280
R	150	180	195	237
S	4xM10	4xM10	4xM10	6xM12
T	72.5	85	93.5	121.5

Pressione max Max pressure	bar	26	30	30	30
Forza assiale max a metà corsa con molle Max axial force at half stroke with springs	kN	35	42	50	56
Forza di serraggio max Max clamping force	kN	80	100	115	134.2

Attrezzo di ricambio Changing unit	SHH 42	SHH 65	SHH 80	SHH 100
Manuale - Manual	00196842	00196844	01863597	Non disponibile Not available
Pneumatico - Pneumatic	01866500	01866599	A richiesta On demand	00194744

DOTAZIONE: Mandrino e viti di fissaggio
(pinze da ordinare separatamente)

EQUIPMENT: Chuck and fixing screws
(collets to be ordered separately)

Con riserva di modifiche tecniche
Subject to technical changes

NOTA: per le pinze vedere pagine 54 e 55
NOTE: for collets see page 54-55