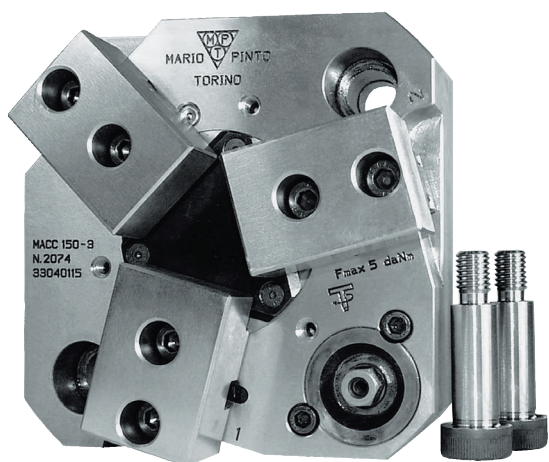


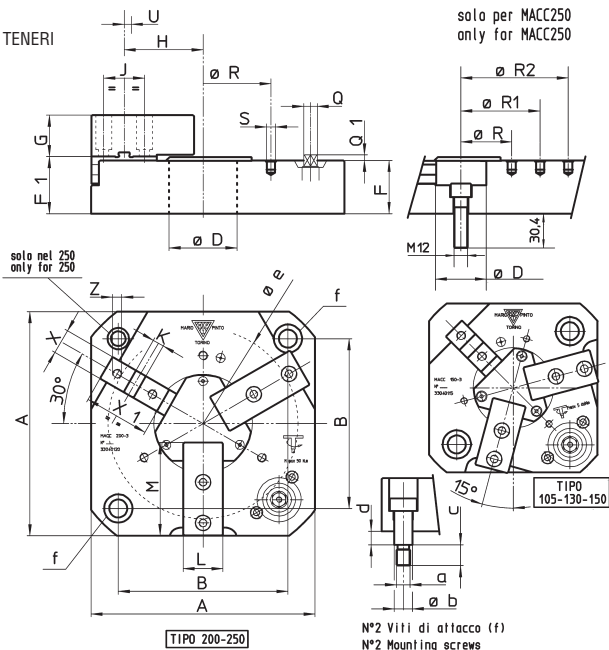
# MACC-3

## Autocentranti MPT a comando manuale non rotanti MPT manual chucks, non-rotating

- Specifici per centri di lavoro - cubi - tavole  
Specific for machining centers - tombstones - tables
- Azionamento frontale  
Frontal operating



Dotazione standard  
1 SET - 3 BLOCCHETTI TENERI  
Standard equipment  
1 SET - 3 SOFT JAWS



Con riserva di modifiche tecniche - Subject to technical changes

MPT tipo MACC-3		105	130	150	200	250
	A	105	129	149	198	248
<b>±0.01</b>	B	80	100	100	150	200
<b>(H7)</b>	D	12	22	42	60	45
	F	47	47	47	47	47
	F1	50.5	50.5	50.5	50.5	50.5
	G	26.5	26.5	26.5	36.5	36.5
	G1	-	-	-	60	60
	H	31.2	40.8	52.1	69.8	69.8
	J	26	26	26	36	36
<b>(h6)</b>	K	10	10	10	10	10
	L	30	30	30	35	35
	L1	30	40	40	50	50
	M	43	51	61	82	82
	M1	49.5	57	67	91	91
<b>Esagono/Hexagon</b>	Q	10	12	12	12	17
	Q1	5	5	5	5	8
	R-R1-R2	56	70	90	120	120-170-220
	S	3xM6	3xM6	3xM6	3xM8	9xM8
<b>Corsa/Stroke</b>	U	1.8	2.5	3.7	5	7.4
	X	20	20	20	22	22
	X1	43	44	44	58	83
	Z	M8	M8	M8	M8	M8
	a	M10	M12	M12	M12	M12
<b>(h6)</b>	b	12	16	16	16	16
	c	16.25	18.4	18.4	18.4	18.4
	d	9	12	12	12	12
*	e	79	100	120	168	218
<b>Coppia/Torque M max</b>	N.m	35	50	50	50	80
<b>F. serr. max/Max grip. force</b>	KN	17	23	25	28	35
<b>Massa con griffe/Weight</b>	Kg	4.5	7	9	17	23
<b>Codice d'ordine/Order code</b>		33040110	33040113	33040115	33040120	33040125

MPT tipo MACC-3	105	130	150	200	250
<b>Standard Set-3 bloc. teneri Set-3 soft jaws</b>	04091013	04091313	04091513	04092013	04092013
<b>Ricambi/Spare parts</b>					
<b>A richiesta On request Set-3 bloc. teneri Set-3 soft jaws</b>	04081013	04081013	04081013	04081013	04081013
<b>Speciale Special Set-3 bloc. teneri Set-3 soft jaws</b>	N.D.	N.D.	N.D.	04102013	04102013
<b>Set-3 false griffe Set-3 master jaws</b>	04071013	04071313		04072013	04072513
<b>Corona Scroll</b>	04031010	04031310	04031510	04032010	04032510
<b>Boccola ritegno Support bush</b>	04051010		04051310		04052510
<b>Pignone Pinion</b>	04041010		04041310		04042510
<b>Chiave verticale Wrench</b>	04711000		04711300		04712500
	Ordinare separatamente/To be ordered separately				

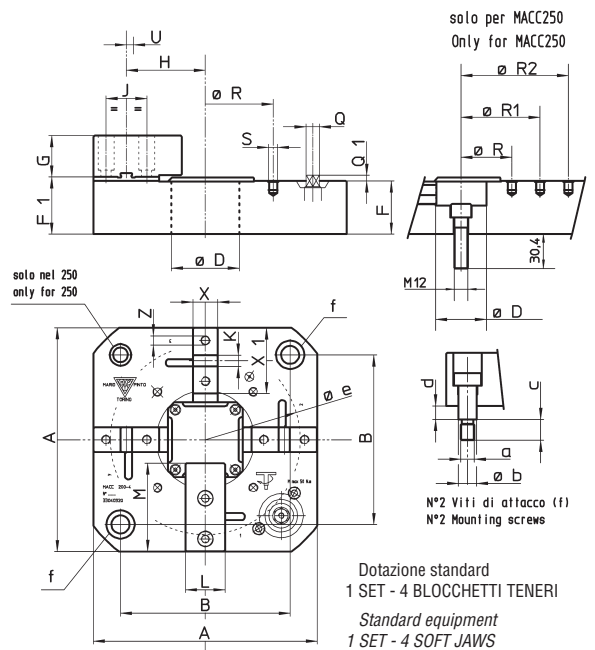
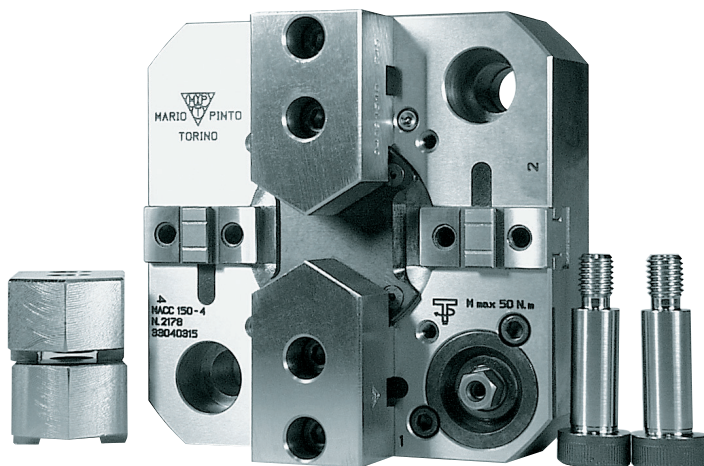
\* Diametro max di bloccaggio per azionamento con chiave verticale  
Max clamping diameter for vertical wrench operating

# MACC-4

## Autocentranti MPT a comando manuale non rotanti MPT manual chucks, non-rotating

• Specifici per centri di lavoro - cubi - tavole  
Specific for machining centers - tombstones - tables

• Azionamento frontale  
Frontal operating



Con riserva di modifiche tecniche - Subject to technical changes

MPT tipo MACC-4		150	200	250
<b>±0.01 (H7)</b>	A	149	198	248
	B	100	150	200
	D	42	60	45
	F	47	47	47
	F1	50.5	50.5	50.5
	G	26.5	36.5	36.5
	G1	-	60	60
<b>(h6)</b>	H	52.1	69.8	69.8
	J	26	36	36
	K	10	10	10
	L	30	35	35
	L1	40	50	50
	M	57	82	82
	M1	67	91	91
<b>Esagono/Hexagon</b>	Q	12	12	17
	Q1	5	5	8
<b>Corsa/Stroke</b>	R-R1-R2	90	120	120-170-220
	S	4xM6	4xM8	11xM8
	U	2.6	3.6	5.7
	X	20	22	22
	X1	44	58	83
<b>(h6)</b>	Z	M8	M8	M8
	a	M12	M12	M12
	b	16	16	16
	c	18.4	18.4	18.4
	d	12	12	12
*	e	120	168	218
<b>Coppia Torque M max</b>	N.m	50	50	80
<b>F. serr. max/ Max grip. force</b>	KN	25	28	35
<b>Massa con griffe/ Weight</b>	Kg	9	17	23
<b>Codice d'ordine/Order code</b>		33040315	33040320	33040325

\* Diametro max di bloccaggio per azionamento con chiave verticale  
Max clamping diameter for vertical wrench operating

MPT tipo MACC-4		150	200	250
	<b>Standard Set-4 bloc. teneri Set-4 soft jaws</b>	04091523	04092023	04092023
	<b>Ricambi/Spare parts</b>			
	<b>A richiesta On request Set-4 bloc. teneri Set-4 soft jaws</b>	04081523	04082023	04082023
		<b>Speciale Special Set-4 bloc. teneri Set-4 soft jaws</b>	N.D.	04102023
		<b>Set-4 false griffe Set-4 master jaws</b>	04071323	04072023
	<b>Corona Scroll</b>	04031520	04032020	04032520
	<b>Boccola ritegno Support bush</b>	04051310		04052510
	<b>Pignone Pinion</b>	04041310		04042510
	<b>Chiave verticale Wrench</b>	04711300		04712500
Ordinare separatamente/To be ordered separately				