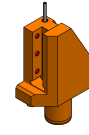


# 06054300 - TH-RAD VDI50 H160 L65 DX POST

<b>Tipo</b>	TH-RAD Portautensili statico radiale
<b>Attacco</b>	VDI 50
<b>Uscita utensile</b>	TH radiale 25x25
<b>Raffreddamento</b>	Refrigerazione esterna
<b>H [mm]</b>	160

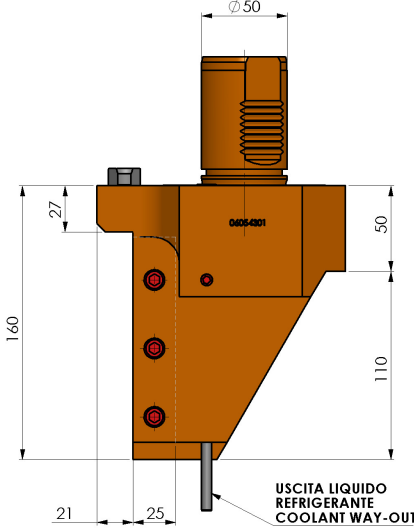


REPLACED BY 06054800

<b>Accessori</b>	N.D.
<b>Note</b>	Ad esaurimento. Sostituito da cod. 06054800
<b>Note per il montaggio</b>	Solo per mandrino secondario

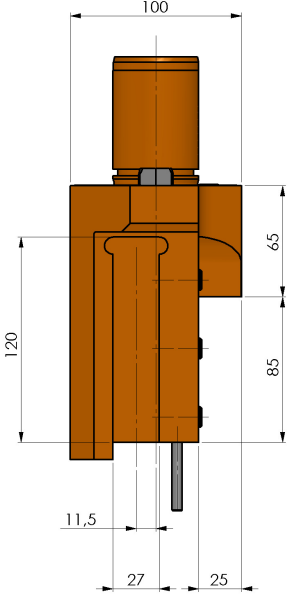
**ATTENZIONE: VERIFICARE L'ORIENTAMENTO DELLA DENTATURA VDI**

Verificare sempre gli ingombri del portautensile in torretta

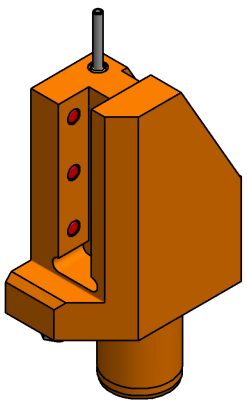


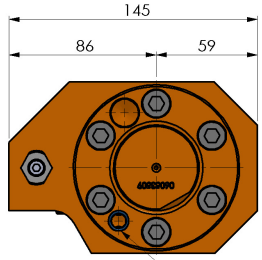
Technical drawing showing side and front views of the tool holder. Dimensions include: total height 160mm, top diameter  $\phi 50$ , top section height 27mm, main body height 50mm, distance from top to coolant outlet 110mm, coolant outlet diameter 25mm, and distance from coolant outlet to side face 21mm.

USCITA LIQUIDO REFRIGERANTE  
COOLANT WAY-OUT



Technical drawing showing a different side view of the tool holder. Dimensions include: total height 120mm, top diameter 100mm, distance from top to coolant outlet 65mm, coolant outlet diameter 25mm, distance from coolant outlet to side face 11.5mm, and distance from coolant outlet to front face 27mm.





Technical drawing showing the top view of the tool holder. Dimensions include: total width 145mm, distance from center to coolant outlet 86mm, and distance from center to side face 59mm.

ENTRATA LIQUIDO REFRIGERANTE  
COOLANT ENTRY

PRODOTTO SOSTITUITO DA 06054800  
 PRODUCT REPLACED BY 06054800

REPLACED BY 06054800

DATE/DATE  
29/05/2024

**06054300-R011**

Salvo modifiche tecniche