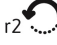
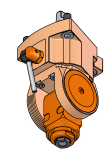
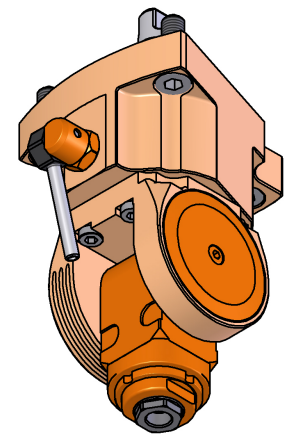
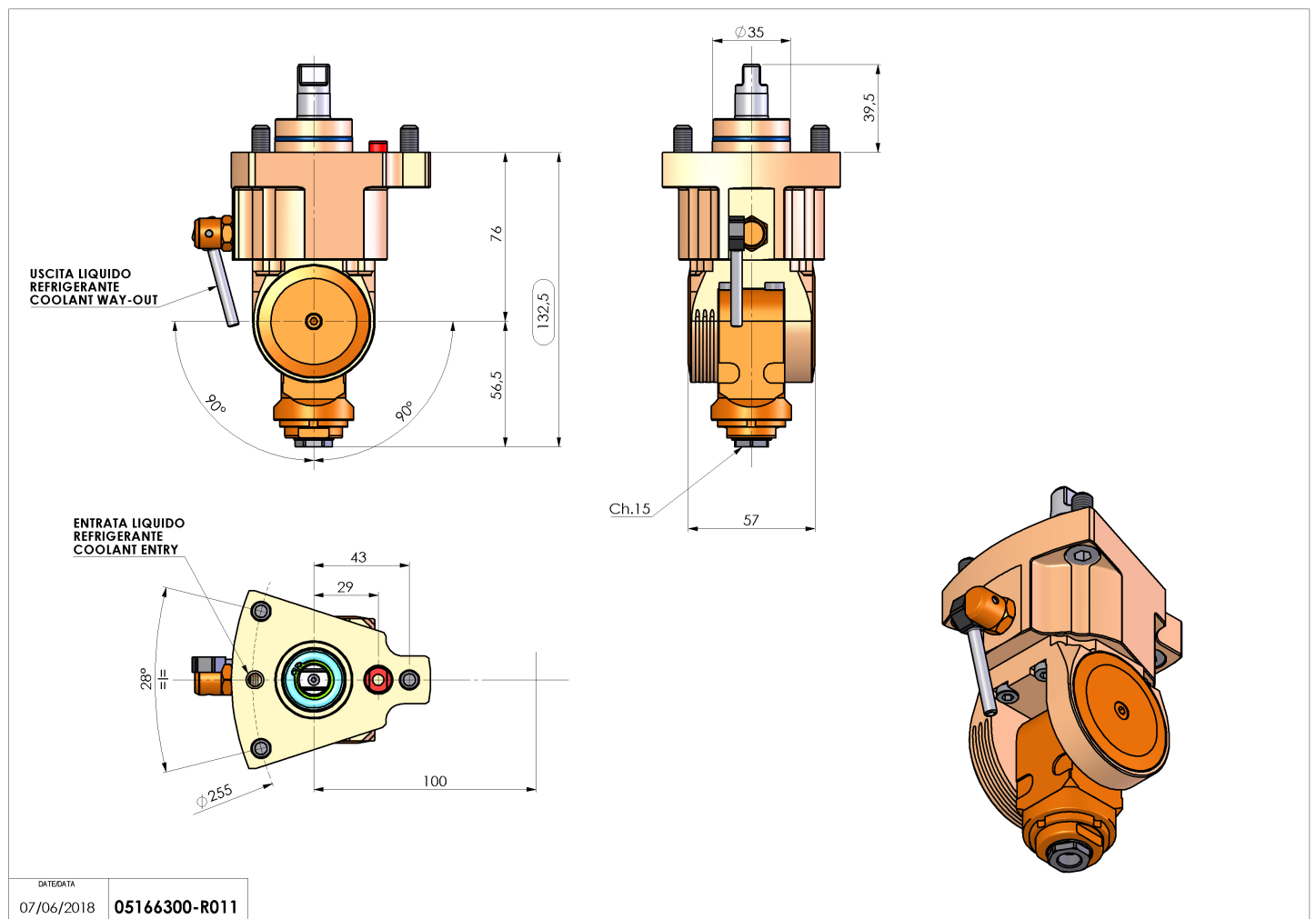


05166300 - LT-T D35 ER11F H76-134

Tipo	LT-T Portautensili tiltabile
Attacco	CILINDRICO 35
Uscita utensile	Portapinza ER 11 F
Raffreddamento	Refrigerazione esterna
Senso di rotazione	r1  r2 
Velocità max [1/min]	6000
Coppia max [Nm]	5
Rapporto	1:1
H [mm]	76-134
Accessori	N.D.
Note	N.D.
Note per il montaggio	N.D.



Verificare sempre gli ingombri del portautensile in torretta



DATE/ATA
07/06/2018 05166300-R011

Salvo modifiche tecniche