

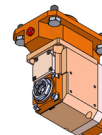
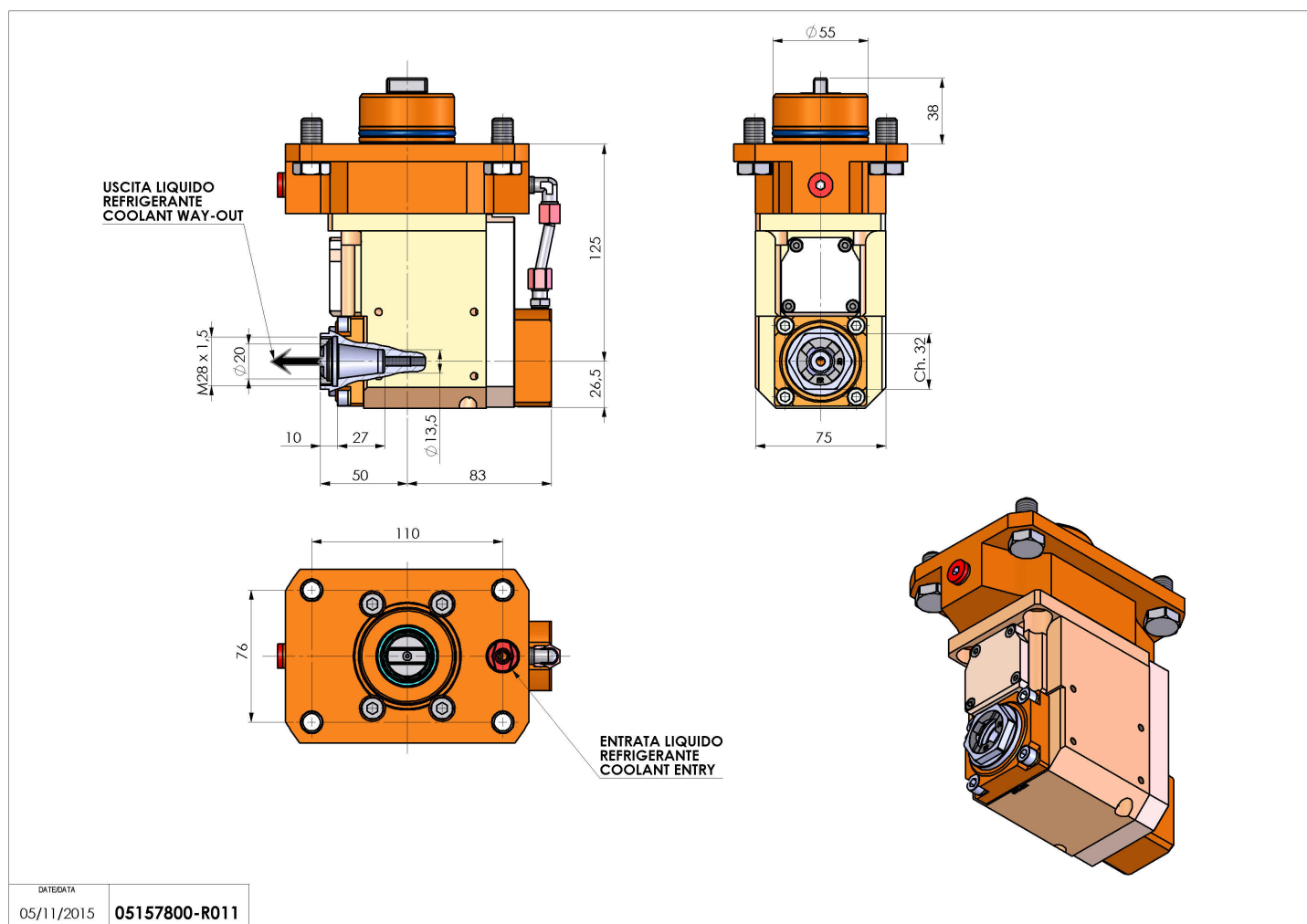


05157800 - LT-A D55 ER20F L-R H125RF1:2MU

| | |
|------------------------------|---|
| Tipo | LT-A Portautensili angolare a 90° |
| Attacco | CILINDRICO 55 |
| Uscita utensile | Portapinza ER 20 F - ghiera interna |
| Raffreddamento | Refrigerazione interna |
| Senso di rotazione | r1  r2  |
| Velocità max [1/min] | in 5000 / out 10000 |
| Coppia max [Nm] | in 50 / out 25 |
| Rapporto | 1:2 |
| H [mm] | 125 |
| H1 [mm] | 27 |
| Pressione max [bar] | 20 |
| Accessori | N.D. |
| Note | N.D. |
| Note per il montaggio | N.D. |



Verificare sempre gli ingombri del portautensile in torretta



| | | |
|-----------|------------|---------------|
| DATE/DATE | 05/11/2015 | 05157800-R011 |
|-----------|------------|---------------|

Salvo modifiche tecniche