

05265300 - LT-S VDI30 ER25 RF H112 OK

Type LT-S
Tool holder straight

Mounting VDI 30

Tool output Collet nut ER 25

Coolant Internal coolant

Direction of rotation r1 ↻ r2 ↻

Max speed [rpm] 6000

Max torque [Nm] 40

Ratio 1:1

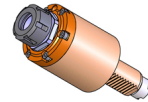
H [mm] 112

Max pressure [bar] 20

Accessories

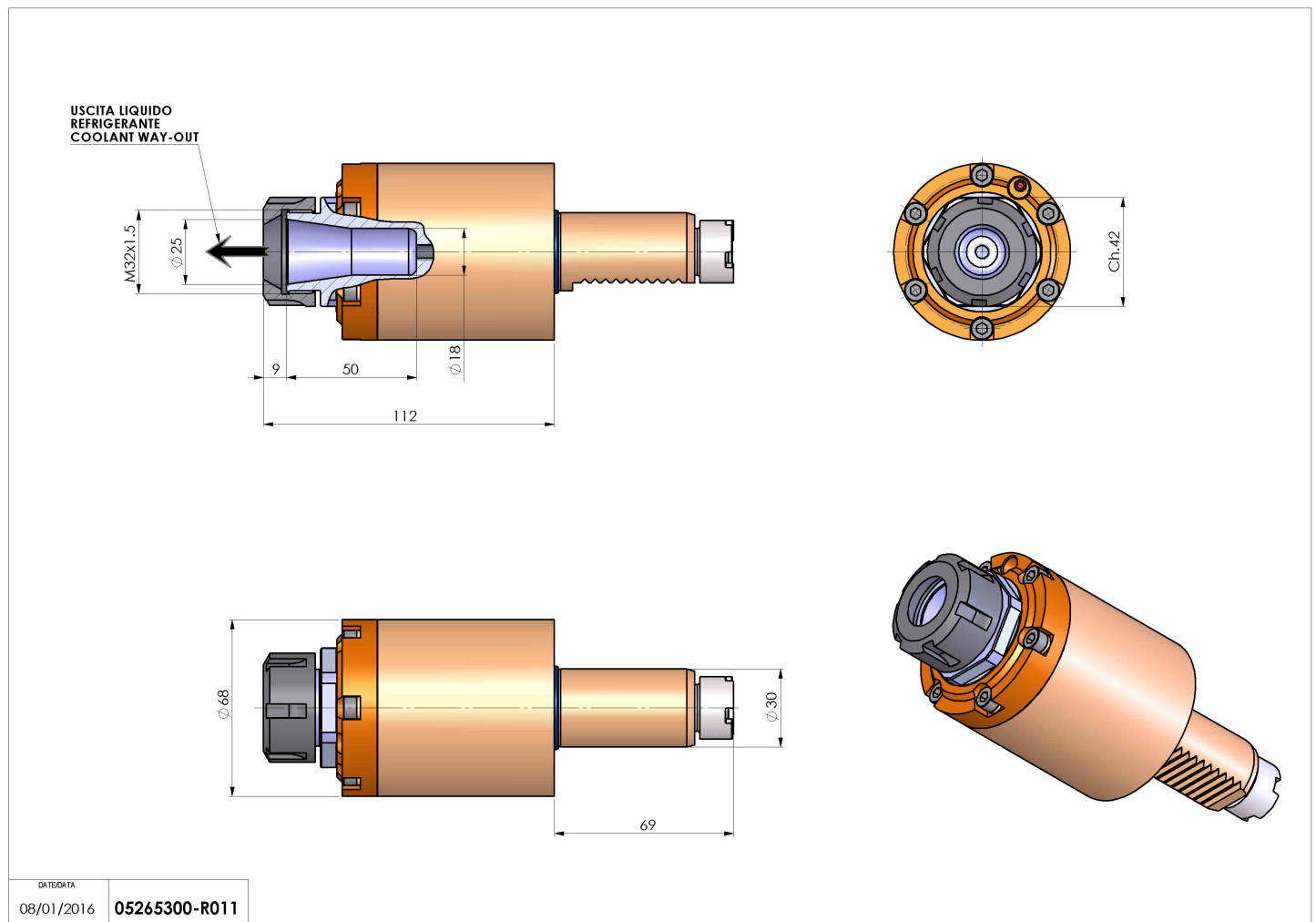
Notes N.A.

Mounting tips N.A.



ATTENTION: CHECK THE ORIENTATION OF THE VDI TEETH

Always check live tool dimensions on the turret



Subject to technical changes