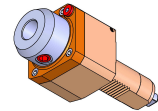


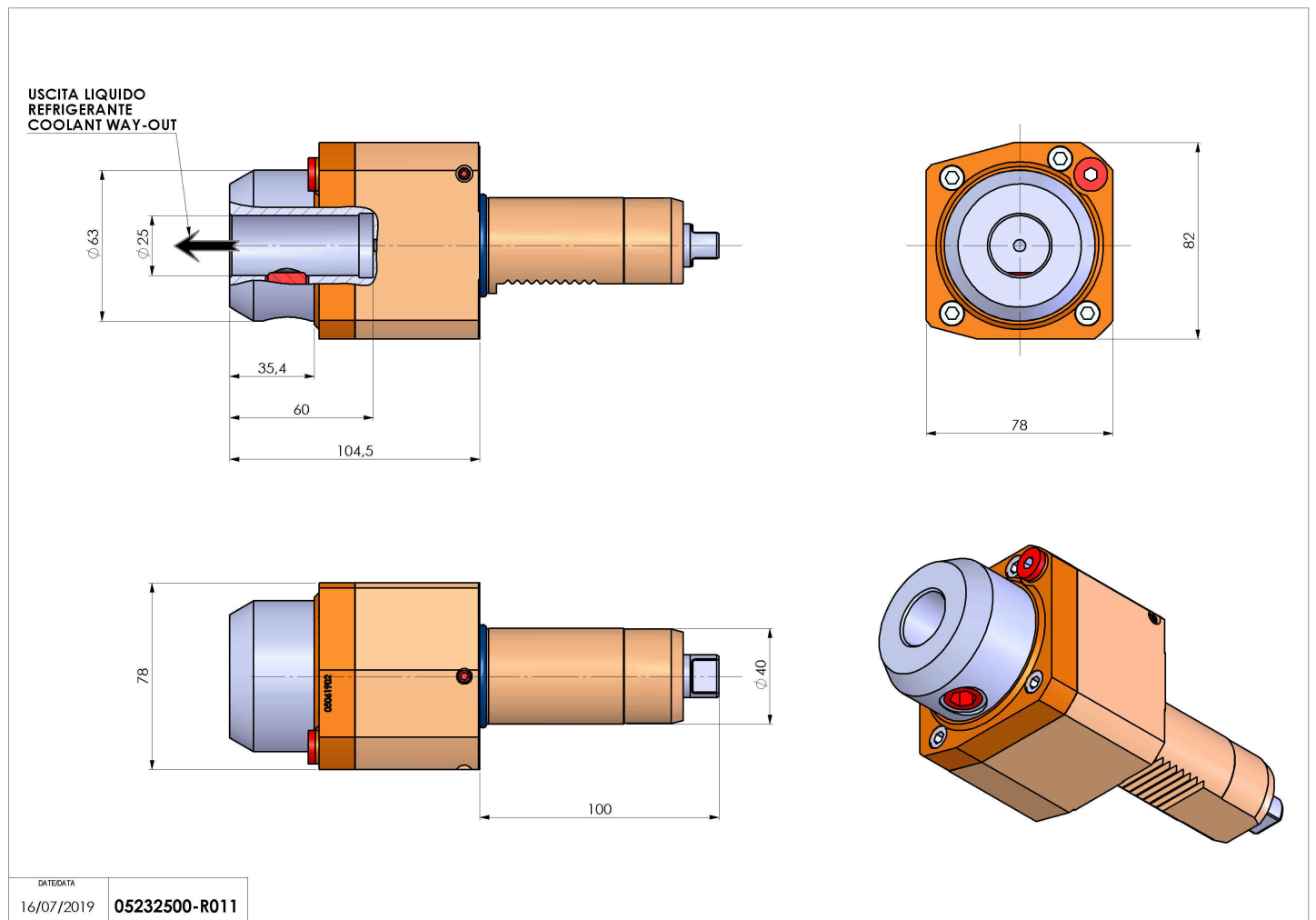
05232500 - LT-S VDI40 WELDON25 RF H105 EM

| | |
|-----------------------|------------------------------|
| Type | LT-S Tool holder straight |
| Mounting | VDI 40 |
| Tool output | Weldon 25 DIN1835B |
| Coolant | Internal coolant |
| Direction of rotation | r1 ↻ r2 ↻ |
| Max speed [rpm] | 6000 |
| Max torque [Nm] | 63 |
| Ratio | 1:1 |
| H [mm] | 105 |
| Max pressure [bar] | 20 |
| Accessories | N.A. |
| Notes | N.A. |
| Mounting tips | N.A. |



ATTENTION: CHECK THE ORIENTATION OF THE VDI TEETH

Always check live tool dimensions on the turret



Subject to technical changes