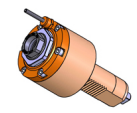


# 05231600 - LT-S VDI40 ER32F H74 EM

<b>Type</b>	LT-S Tool holder straight
<b>Mounting</b>	VDI 40
<b>Tool output</b>	Collet nut ER 32 F - internal nut
<b>Coolant</b>	External coolant
<b>Direction of rotation</b>	r1  r2
<b>Max speed [rpm]</b>	6000
<b>Max torque [Nm]</b>	63
<b>Ratio</b>	1:1
<b>H [mm]</b>	74
<b>Accessories</b>	
<b>Notes</b>	N.A.
<b>Mounting tips</b>	N.A.



**ATTENTION: CHECK THE ORIENTATION OF THE VDI TEETH**

Always check live tool dimensions on the turret

USCITA LIQUIDO  
REFRIGERANTE  
COOLANT WAY-OUT

Dimensions: M40x1.5,  $\varnothing 32$ , 10,5, 38, 74,  $\varnothing 23.5$ , 100,  $\varnothing 85$ ,  $\varnothing 40$ .

Dimensions: Ch. 32, Ch. 50.

DATE/DATE	23/10/2015
	05231600-R011

Subject to technical changes