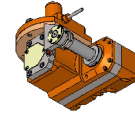


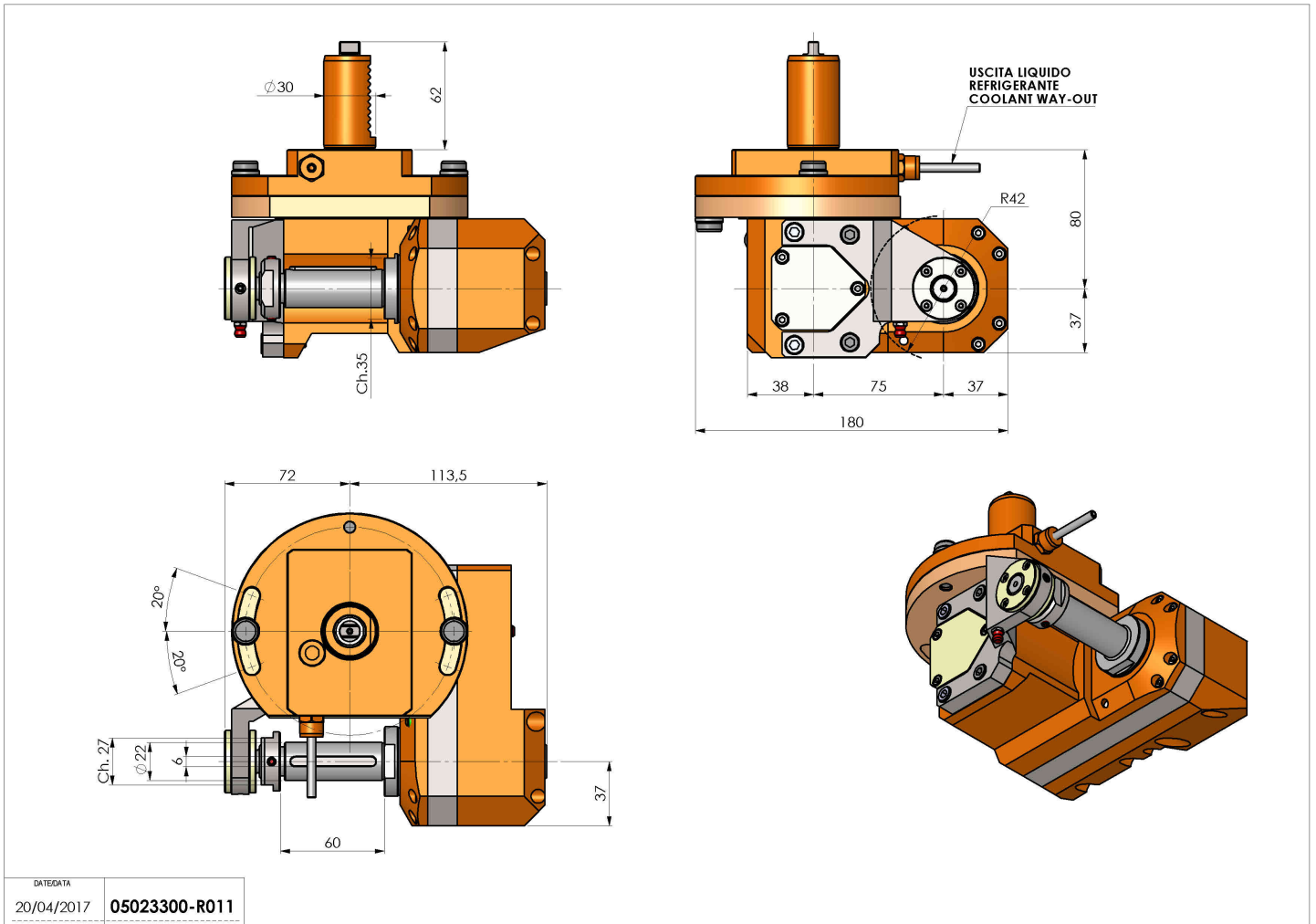
# 05023300 - LT-HOB-SAW VDI30 2,5:1 H80

<b>Type</b>	LT-HOB-SAW Hobbing/tool holder saw
<b>Mounting</b>	VDI 30
<b>Tool output</b>	Shank kit $\varnothing 16$ - $\varnothing 22$ - $\varnothing 27$
<b>Coolant</b>	External coolant
<b>Max speed [rpm]</b>	in 6000 / out 2400
<b>Max torque [Nm]</b>	in 40 / out 100
<b>Ratio</b>	2,5:1
<b>H [mm]</b>	80
<b>H1 [mm]</b>	40
<b>Accessories</b>	N.A.
<b>Notes</b>	N.A.
<b>Mounting tips</b>	Main spindle only



**ATTENTION: CHECK THE ORIENTATION OF THE VDI TEETH**

Always check live tool dimensions on the turret



Subject to technical changes