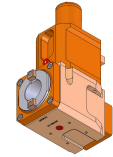


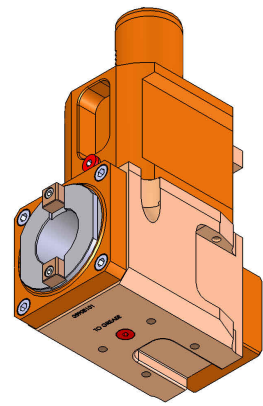
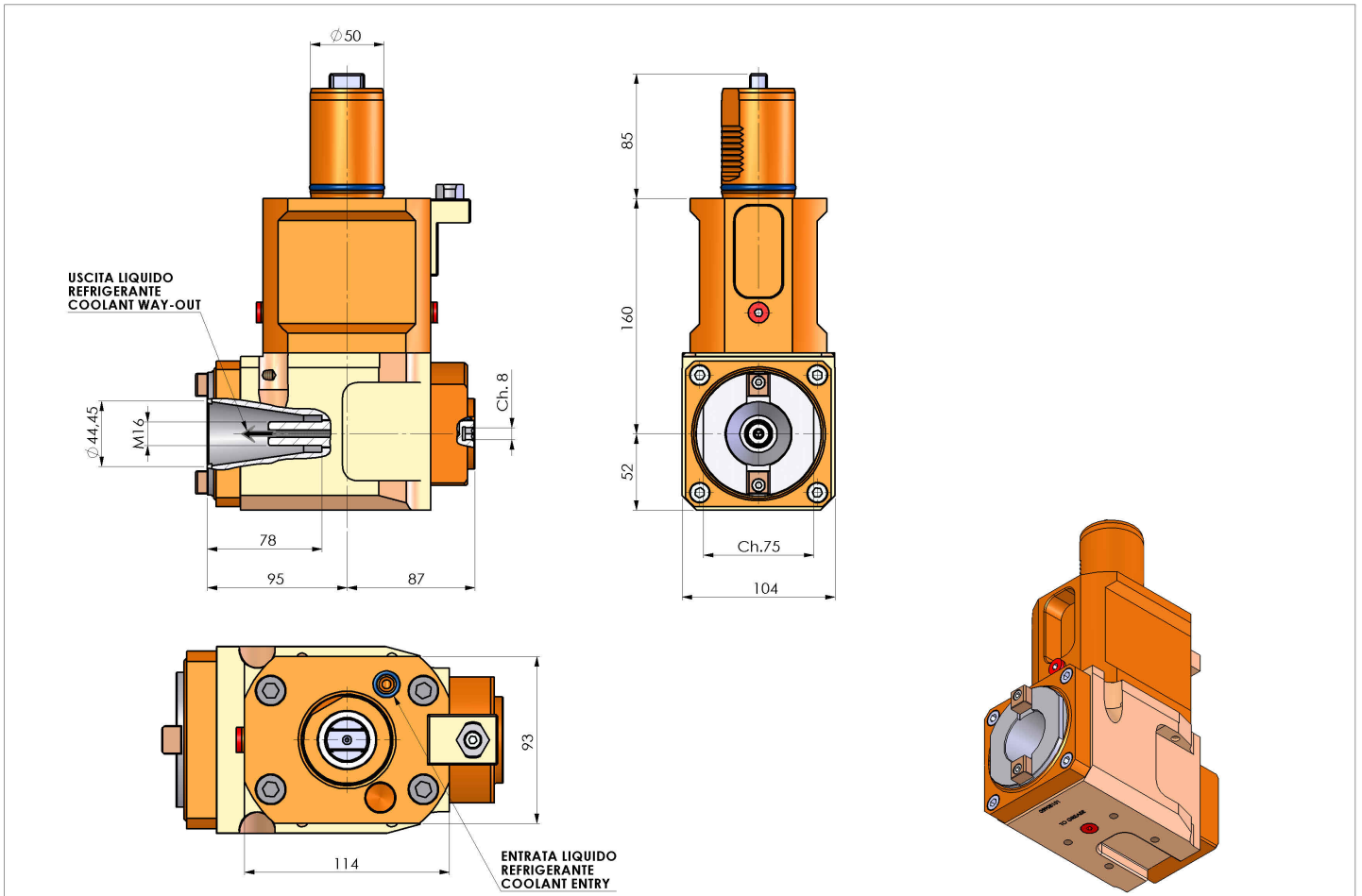
# 05059300 - LT-A VDI50 ISO-BT40 L RFH160MZ

|                              |                               |
|------------------------------|-------------------------------|
| <b>Type</b>                  | LT-A<br>Tool holder angle 90° |
| <b>Mounting</b>              | VDI 50                        |
| <b>Tool output</b>           | Quick Change ISO-BT40         |
| <b>Coolant</b>               | Internal coolant              |
| <b>Direction of rotation</b> | r1 ↻ r2 ↻                     |
| <b>Max speed [rpm]</b>       | 6000                          |
| <b>Max torque [Nm]</b>       | 180                           |
| <b>Ratio</b>                 | 1:1                           |
| <b>H [mm]</b>                | 160                           |
| <b>H1 [mm]</b>               | 52                            |
| <b>Max pressure [bar]</b>    | 20                            |
| <b>Accessories</b>           | N.A.                          |
| <b>Notes</b>                 | N.A.                          |
| <b>Mounting tips</b>         | N.A.                          |



**ATTENTION: CHECK THE ORIENTATION OF THE VDI TEETH**

Always check live tool dimensions on the turret



|               |            |
|---------------|------------|
| DATE/GA       | 04/08/2015 |
| 05059300-R011 |            |

Subject to technical changes